



# GAT MONTHLY MEMBERSHIP PROGRESS REPORT

Results as of: 6/30/2023

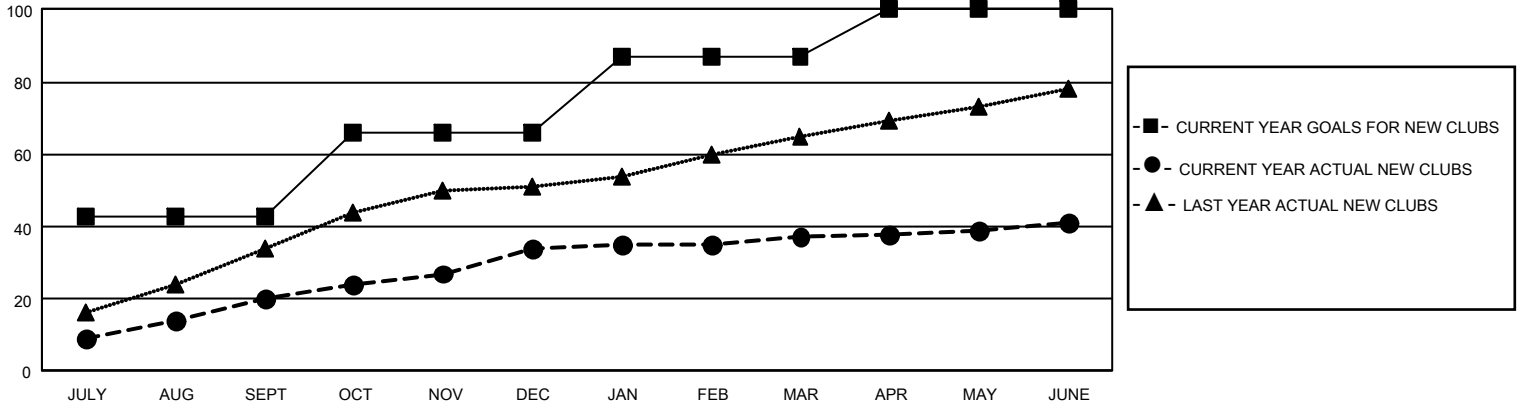
## GMT Constitutional Area 6, Group F

REPORT DOES NOT INCLUDE CLUBS IN UNDISTRICTED AREAS.

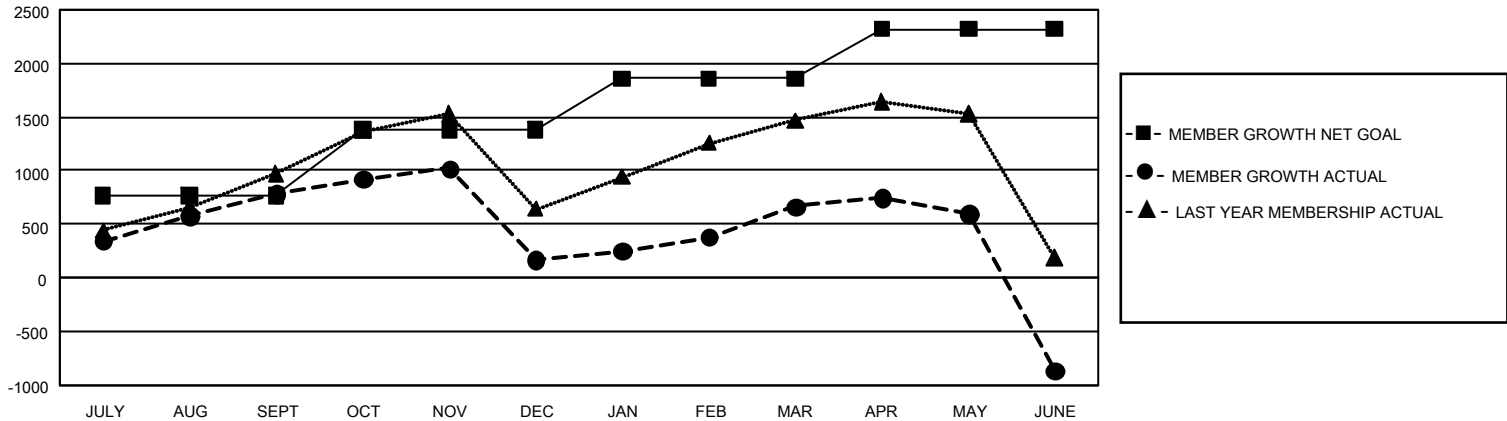
Clubs			
RESULTS FOR 2022-2023			
QUARTER	NEW CLUB GOAL	NEW CLUBS	DROPPED CLUBS
JULY/AUG/SEPT	129	20	3
OCT/NOV/DEC	69	14	22
JAN/FEB/MAR	63	3	4
APR/MAY/JUNE	39	4	24

Members			
RESULTS FOR 2022-2023			
QUARTER	MEMBER GROWTH NET GOAL	MEMBER GROWTH ACTUAL	DROPPED MEMBERS ACTUAL (including transfers)
JULY/AUG/SEPT	765	1,240	405
OCT/NOV/DEC	616	812	1,366
JAN/FEB/MAR	477	832	314
APR/MAY/JUNE	463	681	2,165

GOALS AND ACTUAL NEW CLUBS CUMULATIVE



GOALS AND ACTUAL MEMBERS CUMULATIVE



<b>DROPPED CLUBS: 53</b>	474 CLUBS OF 710 ADDED 1 OR MORE NEW MEMBERS	<b>GENDER DISTRIBUTION</b>	
		MALE 14,962 (74.55%) FEMALE 5,109 (25.45%) NON BINARY 0 (0.00%) PREFER NOT TO ANSWER 0 (0.00%)	
<b>DROPPED MEMBERS</b>		<a href="#">CLICK HERE FOR CUMULATIVE MEMBERSHIP DATA</a>	TOTAL FAMILY UNIT MEMBERS 7,140
DECEASED 92 CLUB CANCELLED 1,228 OTHER 2,933 <b>TOTAL 4,253</b>	FAMILY MEMBERS PAYING HALF DUES 3,887		